



Plainfield Township Recreation Plan 2006 - 2011



The Plainfield Township Recreation Plan was prepared in 2005 - 2006 by the Plainfield Township Parks and Recreation Commission in conjunction with Spicer Group of Saginaw, MI.

It was adopted on February 15, 2006, by the Parks and Recreation Commission. The Plainfield Township Board approved of the Plan by resolution on February 15, 2006.

Plainfield Township Parks & Recreation Commission

Arthur Beauchesne
Joan Lorenz
John Bartle
Carrie Portuesi
Duane Caverly

Plainfield Township Board

Roma Bassi
Elaine Bielby
Richard Brown
Duane Caverly
Charles Parkinson

Planning Consultant

Spicer Group, Inc., Robert Eggers, AICP

Table of Contents

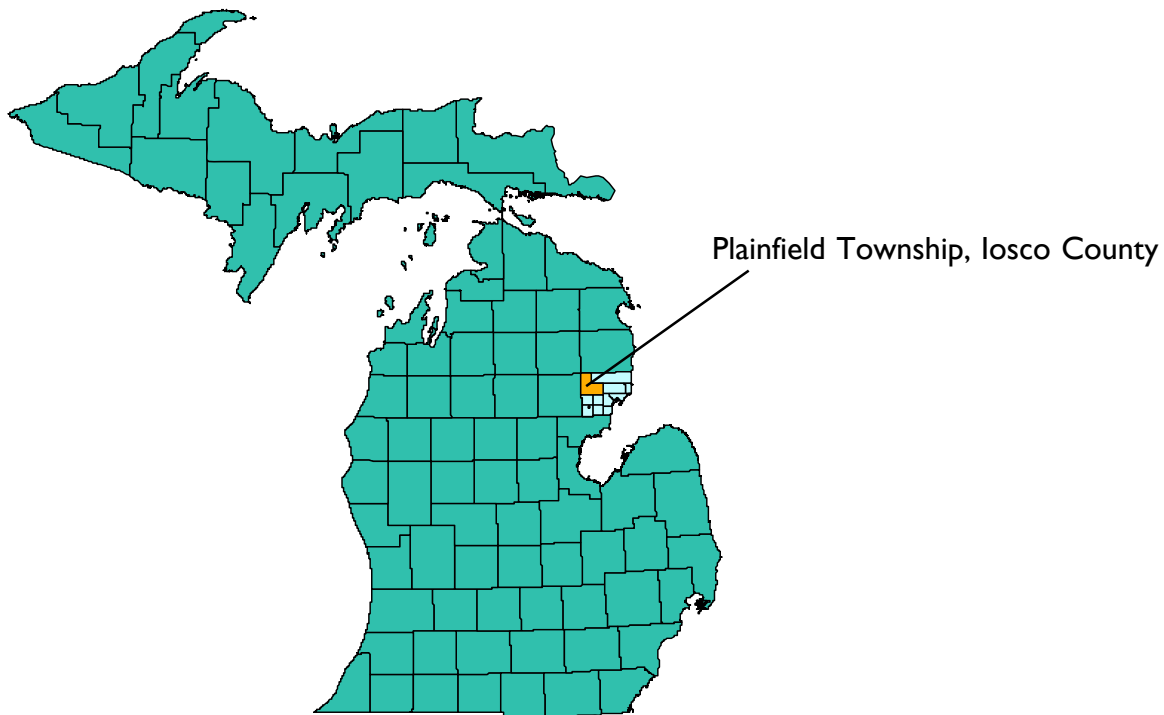
| | |
|---|----|
| I. Community Description | 1 |
| II. Administrative Structure | 2 |
| III. Recreation and Resource Inventories | 3 |
| <i>Map 1 - Park Location Map</i> | 5 |
| <i>Figure 1 - Top 30 Sports Participation</i> | 8 |
| <i>Map 2 - Land Cover and Natural Resources Inventory Map</i> | 10 |
| <i>Map 3 - National Forest Land and State Land</i> | 11 |
| IV. Public Input Process | 12 |
| V. Goals and Objectives | 14 |
| VI. Action Program | 17 |
| VII. Adoption | 20 |
| Appendix A | 21 |
| <i>Budget</i> | |
| Appendix B | 22 |
| <i>Public Input Advertisement Flyer</i> | |
| Appendix C | 23 |
| <i>Notice of availability of the draft plan for review</i> | |
| <i>Notice of public hearing</i> | |
| <i>Minutes from the public hearing</i> | |
| <i>Signed and dated resolution from the Parks and Recreation Commission</i> | |
| <i>Signed and dated resolution from the Plainfield Township Board</i> | |
| <i>Copies of letters transmitting the plan to county and regional planning agencies</i> | |

I. Community Description

Plainfield Township is located in northwestern Iosco County on the east side of Michigan. It is a northern Michigan community with vast open spaces, large woodlands, pristine rivers, and dozens of lakes. It is centered around the unincorporated community of Hale. Plainfield Township is a very large ell-shaped township that comprises three typical 36 square mile townships.

Population of the Service Area - According to the 2000 census, the population of Plainfield Township was 4,292. However, there are more seasonal housing units than permanent housing units in Plainfield Township so the weekend and summer population is generally much larger than 4,292. According to the 2000 U.S. Census, there were 1,897 occupied housing units in Plainfield Township and 2,114 housing units designated for seasonal, recreational, or occasional use. If one applies the average household size of owner-occupied units of 2.25 persons per household to the seasonal units, there is a potential increase of 4,756 residents in the Township for a total population of 9,048. These seasonal home residents are an important part of the community in terms of recreation planning because they usually use their seasonal homes to participate in recreational activities. In other words, they may be heavier users of recreational facilities than the permanent residents.

This recreation plan was developed by the Plainfield Township Parks and Recreation Commission. It focuses on all aspects of recreation for Plainfield Township.



II. Administrative Structure

The Plainfield Township Parks and Recreation Board was formed in 1994 pursuant to the Township Park Act 157 of 1905. The Board consists of up to 6 members who are appointed by the Township Board and a Township Board Representative. The Parks and Recreation Board meets monthly from April - December to make policy and budget decisions regarding parks and recreation in Plainfield Township.

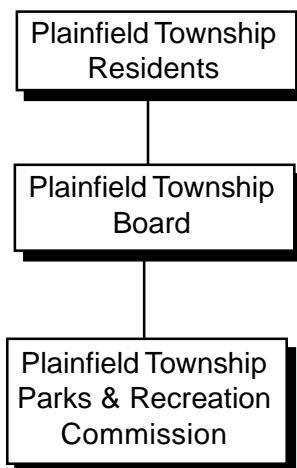
The department of public works staff is responsible for parks operation and maintenance.

Plainfield Township does not currently do any recreation programming. A youth soccer league and little league are run by other entities in the township. The soccer league uses the soccer field at the Township Park (as well as others in the community). The township also has an active senior citizens group that uses the Hale Area Senior Center. This group offers crafts, dancing, bingo, and health and wellness programs.

Funding and Budgets

The Township Parks are funded from the general operating fund. Budgets for 2004 and 2005 are included in the Appendix. In 2005, approximately \$6,000 is allocated for operation and maintenance and \$5,000 is allocated for capital outlay.

Organization Chart Plainfield Township Parks and Recreation



III. Recreation and Resource Inventories

Plainfield Township’s recreational facilities and programming are centered around its Township Hall Park. Lake access is provide by four other small township parks. While small in size, the waterfront access parks with parking are all classified as neighborhood parks because they draw from a further distance than a mini-park. They actually draw residents from the entire Township (and beyond) who are looking for lake access. The inventory below was completed by the township and the consultant by updating the inventory listed in their past recreation plan. Map 1 shows the location of the parks in Plainfield Township.

Name: Township Hall Park **Type:** Community

Size: 8 acres

Service Area: Plainfield Township

Purpose/Use: All purpose park that meets community-based recreational needs. The park abuts adjacent recreational land owned by the school district and the county fairgrounds.

Recreational Facilities:

- senior citizens retirees center
- 1 basketball courts
- playground
- picnic tables and grills
- portable skate park (removed in winter)
- 2 tennis courts

Support Facilities:

- paved/gravel parking

Accessibility: 3 (most of the facilities/park areas meet accessibility guidelines)

Name: Loon Lake Park **Type:** Neighborhood Park

Size: 1.19 acres

Service Area: Plainfield Township

Purpose/Use: lakefront access

Recreational Facilities:

- swimming beach
- picnic area

Support Facilities:

- parking
- restrooms

Accessibility: 1 (none of the park meets accessibility guidelines)

Name: Londo Lake West Park **Type:** Neighborhood Park

Size: 1.644 acres

Service Area: Plainfield Township

Purpose/Use: Waterfront Access

Recreational Facilities:

- swimming beach
- picnic area with grills

Support Facilities:

- restrooms
- parking

Accessibility: 1 (none of the park meets accessibility guidelines)

Name: Chain Lake Beach **Type:** Mini Park

Size: .5 acres

Service Area: Plainfield Township

Purpose/Use: Waterfront Access

Recreational Facilities:

- swimming beach

Accessibility: 1 (none of the park meets accessibility guidelines)

Name: Jose Lake Beach **Type:** Mini Park

Size: .5 acres

Service Area: Plainfield Township

Purpose/Use: Waterfront Access

Recreational Facilities:

- swimming beach

Accessibility: 1 (none of the park meets accessibility guidelines)

It should also be noted that the Township is currently negotiating to acquire approximately 10 acres of land on Loon Lake.

According to the Department of Natural Resources, Plainfield Township has not received any funding from the State of Michigan for its park facilities.

Map 1
Plainfield Township
Iosco County

Park Location Map

Source: Michigan Geographic Data Library and Plainfield Township



Other Facilities

There are several other public recreational facilities in Plainfield Township that are worth noting when considering what is available in the area. They are listed below:

- Long Lake Park & Boat Launch - Department of Natural Resources
- Round Lake Campground & Boat Launch - U.S. Forest Service
- Londo Lake East Park Boat Launch
- American Legion Park - 2 ball fields and 2 soccer fields
- Rollways Park - U.S. Forest Service
- South Branch Trail Camp - U.S. Forest Service
- Hale School District - playgrounds, football field, softball field, baseball field
- Iosco County Fairgrounds - located adjacent to the Township Park. Has race track, exhibition buildings and barns.
- Riding and hiking trail on the west side of the Ausable River

Lastly, it should be noted that the Huron National Forest covers large portions of Plainfield Township. It covers approximately 75% of the southeast part of the township (Town 24 N, Range 5 E) and 50% of the northern part of the township (Town 23 N, Range 6 E). Within the National Forest there are many miles of snowmobile and ORV trails, which are maintained by Iosco County.



Comparison to Standards

The Recommended Classification System for Local and Regional Open Space from the Michigan Department of Natural Resources defines 5 types of parks that may be applicable to Plainfield Township.

- Mini-Park
- Neighborhood Park
- School-Park
- Community Park
- Large Urban Park

A mini-park is less than 1 acre in size and is less than 1/4 mile from a residential setting. It is used to address limited, isolated or unique recreational needs. Neighborhood Parks are generally 5 to 10 acres

in size and they serve as the recreational and social focus of the neighborhood. Their service area is generally 1/4 to 1/2 mile. School-Parks can combine parks with school sites to help meet the recreational space needs for the community. Community Parks serve a broader purpose than Neighborhood Parks. They have more amenities and usually serve two or more neighborhoods within 1/2 to 3 miles and are generally 30 - 50 acres in size. The Township Hall Park can be classified as a Community Park even though it is only 8 acres in size because it serves the entire community and because it combines with the adjacent school land and County Fairgrounds to become a larger park. Large Urban Parks are generally 50 acres or more in size and they serve a broader purpose than a community parks. They focus on meeting community based recreational needs, as well as preserving unique landscapes and open spaces.



Plainfield Township has approximately 12 acres of Township park land for its 4,292 permanent citizens. General industry standards would suggest 5 - 10 acres of regional park land per 1000 citizens, or approximately 20 - 40 acres of regional park land for Plainfield Township. This would mean that Plainfield Township has inadequate regional park land for its citizens. Since there are more seasonal homes than permanent homes, the seasonal and weekend population is much larger than 4,292, indicating an even larger deficit in park land. The township has no single large park with broad based amenities and open space.

Conversely, if one considers the other public parks in the township, particularly the U.S Forest Service facilities, there may indeed be enough public park land in Plainfield Township. Additionally, more recent park guidelines indicate that one must also consider the "Level of Service" desired by the community. If Plainfield Township residents' needs are met with the existing 12 acres of County Park land, then that amount is sufficient. This is why the community input portion of a recreation plan is so important. The Parks and Recreation Commission needs to understand the wishes of the community it serves.

As a supplement to the recommended standards for park acreage, data from the Sporting Goods Manufacturers Association (SGMA) is another way to help understand recreation trends. It is important to be aware of national recreation to be able to anticipate activities which will incorporate a large number of participants and which activities show the greatest growth in popularity. The SGMA conducts annual surveys that analyze the size of sports product markets in order to determine sports participation trends. The data in Figure 1 show the results of the latest SGMA survey conducted in January of 2005, which monitored 103 sports and fitness activities. The top 30 sports and activities in the nation, based on participation in 2004, are listed. The definition of *participation* includes persons

Figure 1

Top 30 Sports by Participation
U.S. Population, 6 years and older, at least once per year

| Sport/Activity | Number of Participants in 2004 (thousands) | 6-Year Change (1998-2004) | 16-Year Change (1987- 2005) |
|--------------------------------|---|--------------------------------------|--|
| Swimming (Recreational) | 95,268 | 1.0% | na |
| Walking (Recreational) | 92,677 | 14.6% | na |
| Bowling | 53,603 | 6.0% | 12.1% |
| Free Weights | 52,056 | 26.2% | 130.8% |
| Bicycling (Recreational) | 52,021 | -4.7% | na |
| Camping | 49,412 | -2.4% | -1.9% |
| Fishing | 47,906 | -13.7% | -18.0% |
| Treadmill Exercise | 47,463 | 28.0% | 979.7% |
| Stretching | 40,799 | 16.2% | na |
| Hiking | 40,713 | 1.5% | na |
| Fitness Walking | 40,299 | 10.7% | 48.4% |
| Running/Jogging | 37,310 | 6.7% | 0.0% |
| Billiards/Pool | 36,356 | -8.3% | 3.0% |
| Basketball | 34,223 | -19.3% | -4.2% |
| Stationary Cycling | 31,431 | 2.1% | 2.2% |
| Weight Resistance Machines | 30,903 | 37.2% | 102.5% |
| Golf | 25,723 | -5.8% | -14.1% |
| Calisthenics | 25,562 | -17.5% | na |
| Volleyball | 22,216 | -16.6% | -38.2% |
| Tennis | 18,346 | 8.3% | -13.2% |
| Abdominal Machine (Device) | 17,440 | 5.5% | na |
| Roller Skating (Inline Wheels) | 17,348 | -45.8% | 269.5% |
| Football | 16,436 | -10.1% | na |
| Other Exercise to Music | 16,365 | 18.2% | na |
| Softball (Regular) | 16,324 | -23.5% | na |
| Soccer | 15,900 | -12.5% | 3.3% |
| Aerobics | 15,767 | -25.0% | -25.7% |
| Elliptical Motion Trainer | 15,688 | 305.9% | na |
| Fitness Swimming | 15,636 | 2.5% | -7.5% |
| Hunting (Shotgun/Rifle) | 15,196 | -8.9% | -39.8% |

Source: SGMA Superstudy of Sports Participation

six years and older who have participated in the activity at least once during the year of the survey. Sports activities that are growing in popularity may require a facilities expansion.



Accessibility

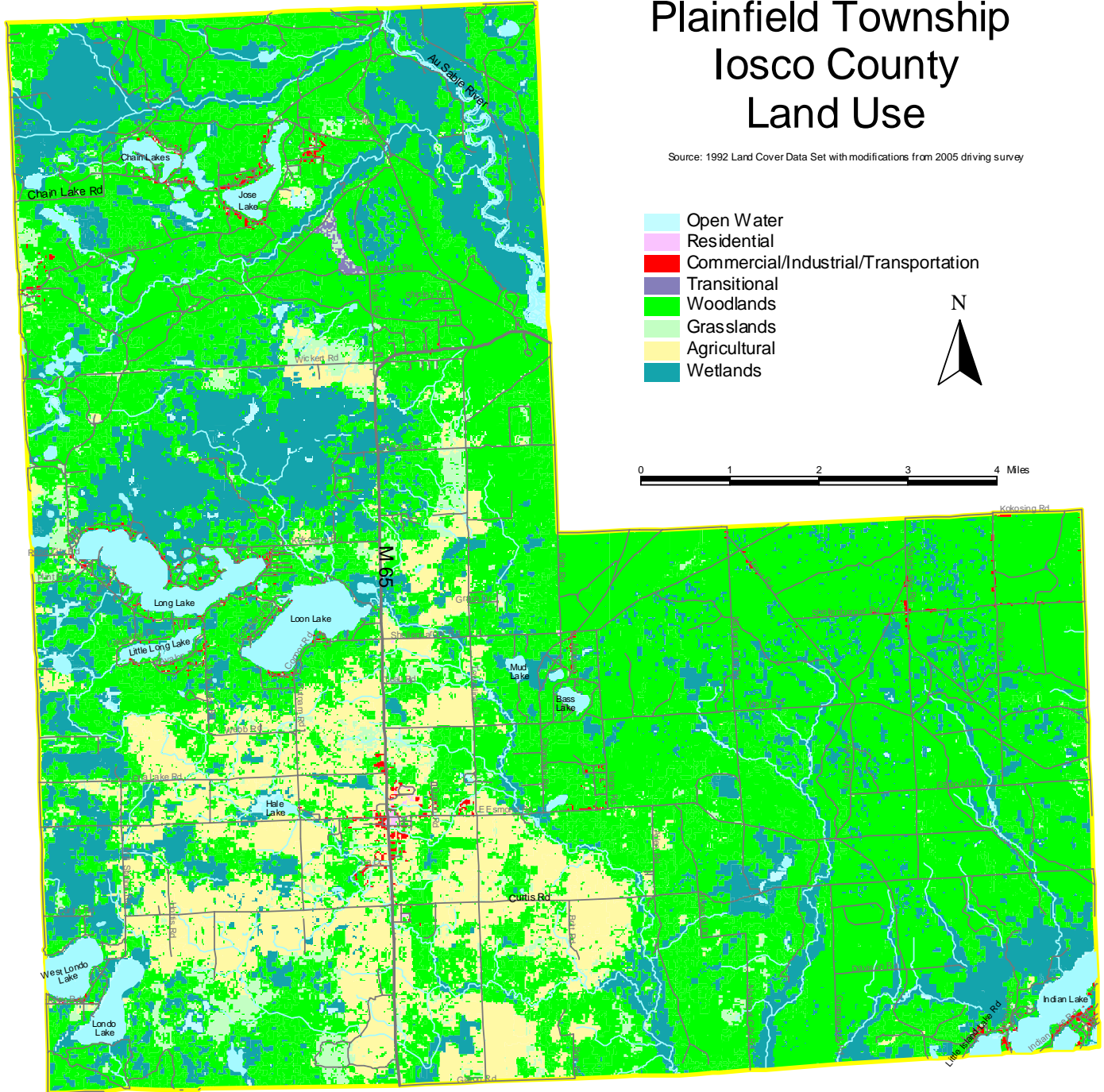
As noted in the inventory listing, Plainfield Township Parks do not meet all criteria for handicap accessibility. The Parks and Recreation Commission is aware of this deficiency and it will make efforts to improve accessibility as it continues to develop its parks. This would include accessible parking, pathways, restrooms, activity areas, amenities, and signage.

Natural Resource Inventory

A resource inventory can be used to identify open space areas that may be desirable for protection and/or public access through acquisition or other means. Plainfield Township is rich in natural resources. Map 2 shows existing land use in Plainfield Township. The vast majority of land in Plainfield Township is woodlands. The woodlands that are part of the Huron National Forest and the Michigan Department of Natural Resources are shown in Map 3. Other significant natural resources are the numerous lakes, creeks and rivers. The most significant river is the AuSable River in the northern portion of the township. It is Michigan's longest river and is a haven for fish and wildlife.

Map 2 Plainfield Township Iosco County Land Use

Source: 1992 Land Cover Data Set with modifications from 2005 driving survey

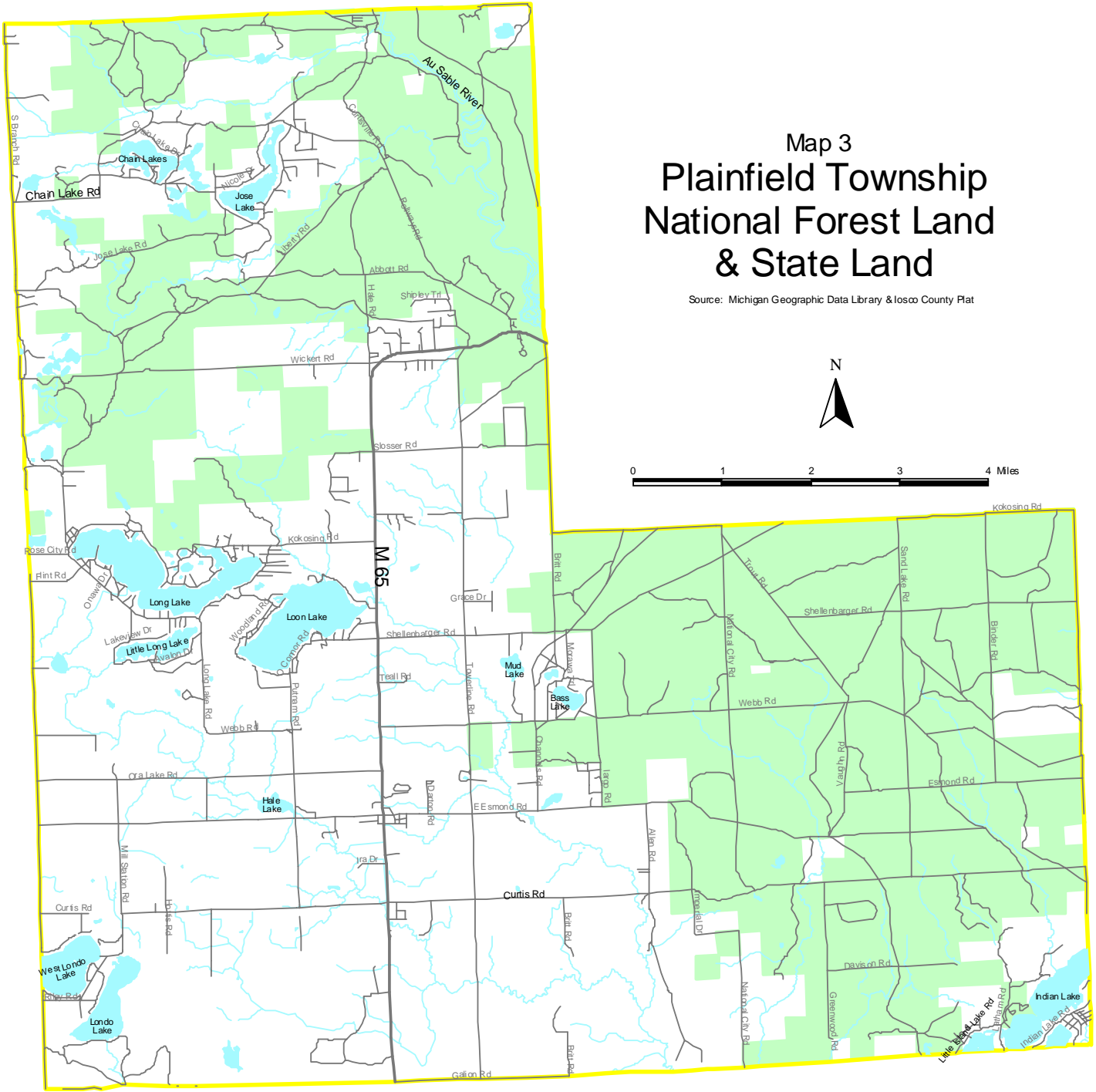


Map 3 Plainfield Township National Forest Land & State Land

Source: Michigan Geographic Data Library & Iosco County Plat



0 1 2 3 4 Miles



IV. Public Input Process

Plainfield Township gathered public input regarding parks and recreational facilities and programming on two different occasions during the preparation of the master plan. The first was an open community meeting on Wednesday, December 7, 2005 at the Township Hall. Flyers were placed around the community and a notice was placed in the newspaper.



The second public input took place at the required public hearing on February 15, 2006. Prior to that time a draft of the recreation plan was available for review in the Township Hall. The public was notified of this draft availability and the public hearing in the local

Community Meeting

All attendees at the community meeting were given an opportunity to provide input and ideas regarding parks and recreation in Plainfield Township. Those ideas are listed below:

- Ball fields in some of the parks
- Possible additional property for ball fields
- Additional recreational property for soccer fields and ball diamonds (13 acres by Ira Rd.)
- Make the soccer field at township park more formal
- Need more recreation for the kids
- New playground equipment for kids
- Horseshoe Pits
- Add equipment to skate park
- Install a security camera at skate park
- Enclose drain at Township Park to access/expand usable park area
- Boardwalk from Township Park to High School - safe access through wetlands
- Boardwalk through wetlands
- Path from high School to 4 Corners
- Possible ice skating rink
- Develop the park on Loon Lake
- Day use only at Loon Lake
- Pavilion at new park (Loon Lake)
- Boat Launch Improvements

Londo Lake can be dangerous on both sides of the road
Fishing docks on Chain Lakes, Londo Lake, and Loon Lake
Leave Loon Lake mostly natural
Nature Trails with rest stations
Fishing/overlook platform
Extend snowmobile trails into town
Restrooms
Barrier Free accessibility
United Way may be able to provide matching funds

V. Goals and Objectives

Developing goals and objectives is an important part of the recreation planning process. The overall goal of a parks and recreation department is, obviously, to provide recreation opportunities for the community and/or region it serves, and possibly for tourists. More specific goals must be based on the demographic characteristics of the population served and the physical and environmental characteristics of the area.



Goals are the broadest level. They are overreaching and general. Objectives carry out the purpose of the goal. The Action Program is the last level and the most specific. It identifies specific projects. The action plan can also include organizational, staffing, programming, public information, and operation and maintenance actions.

The Plainfield Township Parks and Recreation Commission formulated the following goals and objectives based upon the input received at the community input session in December of 2005 and the demographic and physical characteristics in Plainfield Township.

GOAL 1

Provide safe broad community-based recreation opportunities that improve the overall quality of life for all residents of Plainfield Township.

Parks serve as a natural gathering place for community residents and they provide free or inexpensive recreation opportunities. To enrich the quality of life in Plainfield Township, it is important to continue to provide and improve Township park facilities. Plainfield Township residents fall within moderate to average incomes ranges and they wish to have community parks with basic amenities that appeal to young and old alike. Median age of residents in Plainfield Township is 48.7 years, which is 13 years older than that of Michigan at 35.5 years. Recreation facilities need to consider the needs of this aging population which includes many former part-time residents who have chosen to move to Plainfield as full-time residents after retirement.

Objective – Continue to add amenities to the Plainfield Township park facilities based upon community input.

Community input is a solid indicator of what residents in the community want in terms of recreational facilities. The Parks and Recreation Commission will continue to plan its improvements based upon the needs expressed in formal and informal input sessions.

GOAL 2

Provide recreational facilities that take advantage of the abundant water and woodland natural resources in Plainfield Township.

Plainfield Township is rich with lakes, rivers, and woodlands. The Parks and Recreation Commission wishes to preserve these natural features and allow residents and visitors to take advantage of the recreational opportunities they provide.



Objective – Continue to improve the facilities at the existing waterfront parks to provide beach access, parking, and other amenities.

Objective - Look for more waterfront property so as to provide more public access.

Most of the lake frontage in Plainfield Township is held privately. Plainfield Township wants all residents to be able to enjoy the lakes and rivers in the community via public park access. It wishes to improve the lakefront parks that it has and it wants to examine opportunities for acquiring more land.

Objective - Work with Iosco County to examine methods for improving and expanding off road vehicle (ORV) and snowmobile trails within Plainfield Township.

Many outdoor enthusiasts take advantage of the ORV and snowmobile trails in Plainfield Township which are maintained by Iosco County. However, residents and visitors have expressed a need to improve these trails, especially their access to local amenities such as restaurants and gas stations. Improving access into Hale would provide an economic boost to the community. However, this needs to be balanced with ongoing concerns over noise and safety that are inherent with snowmobiles and ORV's.

GOAL 3

Continue to improve and upgrade Plainfield Township recreational and support facilities so as to offer the community parks that it can be proud of.

Park facilities are among the most visible indicators of a community's identity and pride as well as local tax dollars at work. The Parks Board wishes to provide quality facilities that show that Plainfield Township is an active community that takes pride in its community facilities.

Objective – Keep park facilities safe and well maintained.

Objective – Add support facilities so as to improve the ease of use for our parks.

GOAL 4

Provide recreational opportunities for people with disabilities.

The Parks and Recreation Commission wishes to provide recreational opportunities for all township residents, including those with disabilities. This will be especially important as the population in the community continues to age because mobility and accessibility issues increase with age.

Objective – Make sure that all improvements and upgrades to park facilities are handicap accessible.

GOAL 5

Improve the health and fitness of Plainfield Township residents.

Because there are limited opportunities for fitness and recreation in the Hale area, the Plainfield Township Parks and Recreation Commission wants to offer facilities that will allow residents to enjoy the benefits of physical fitness.

Objective – Evaluate existing facilities in terms of fitness opportunities for the community.



Objective – Investigate programming opportunities that take advantage of park facilities.

While Plainfield Township currently does not offer any recreational programs, it may wish to in the future so as to enhance the quality of life for the residents of Plainfield Township. The soccer league currently uses the Township soccer fields for its program. There may be other partnering opportunities with the school district, the fairgrounds, or other recreational groups. The ability to offer programming is dependent upon available funding and staffing for such a project.

Objective - Add passive and active facilities as needed based upon available funding and community input.

V. Action Program

With goals and objectives in place, the Plainfield Township Parks and Recreation Board was able to develop a 5 year action program to work toward accomplishing the goals and objectives. Projects were assigned a priority of 1 through 5 with 1 being most important and 5 being least important.

1. Action Item - Develop Loon Lake Park Property

Priority - 1

Relates to Goal - All

Rationale/Discussion

If the Township is successful in acquiring new park land on Loon Lake, it wishes to develop the property into a quality waterfront park. Amenities that the Township would like to see at the facility include nature trails, a boat launch, pavilions and picnic area, restroom facilities, and a fishing platform. The township feels these amenities may be funded with a Michigan Department of Natural Resources Grant.

2. Action Item - Add equipment to the Skate Park and improve security.

Priority - 3

Relates to Goal - 1, 3, 5

Rationale/Discussion

The Skate Park has been added in the last five years and has been well received by youth in the community. Based upon community input, the board would like to continue to add equipment and it would also like to add security cameras to improve safety in the area.

3. Action Item - Develop Ice Skating Rink at Township Park

Priority - 3

Relates to Goal - 1, 3, 4, 5

Rationale/Discussion

The Township does not currently offer any winter recreational sports in its parks. The addition of a skating rink at the Township Park would provide a cold weather recreation opportunity that is not available anywhere else in the area.

3. Action Item - Add fishing docks to the waterfront parks

Priority - 4

Relates to Goal - 1, 2, 3, 4

Rationale/Discussion

Plainfield Township would like to provide shore fishing opportunities at its lakes. The addition of docks will allow those without access to a boat the chance to fish in Plainfield Township Lakes. It can also provide a handicap accessible means of fishing. This action item can be undertaken one park at a time as the Township can secure funds.

4. Action Item - Enclose the drain at the Township Park so as to access and expand the usable park area.

Priority - 2

Relates to Goal - 1, 3

Rationale/Discussion

The Township Park property is currently divided by a drainage ditch. The area on the east side of the drain is not currently used because it cannot be accessed. Enclosing the drain would increase the usable area of the park and allow for more recreational opportunities.

5. Action Item - Add a boardwalk from the Township Park to the high school through the wetlands.

Priority - 4

Relates to Goal - 1, 3, 4, 5

Rationale/Discussion

If the drain mentioned in Action Item 4, above, is enclosed, the Township would like to construct a path that would connect the township hall and adjoining property to the high school.

Since some of the area is a wetland, the path would probably need to be an elevated boardwalk. This would improve non-motorized path connections through town, providing residents with more passive fitness opportunities.

6. Action Item - Acquire additional land for soccer fields and ball diamonds

Priority - 5

Relates to Goal - 1, 3, 5

Rationale/Discussion

Plainfield Township has no ball diamonds and only 1 soccer field in its existing park system. Acquiring additional land would allow more sports to be played on township facilities.

7. Action Item - Add playground equipment to the parks.

Priority - 4

Relates to Goal - 1, 3, 5

Rationale/Discussion

There is limited playground equipment at the Township Park and no playground equipment at any of the Township's waterfront park. As funding allows, the Township wishes to add equipment to enhance the offerings at its parks.



VII. Adoption

After the public input and notification process described in Section IV, the Plainfield Township Parks and Recreation Board adopted a resolution on February 15, 2006 recommending that the Plainfield Township Board adopt the Recreation Plan.



On February 15, 2006, the Plainfield Township Board adopted the Recreation Plan.

Copies of the Recreation Plan were transmitted to the Iosco County Planning Commission, the East Central Michigan Planning and Development Region, and the Michigan Department of Natural Resources in February of 2006.

Copies of the notification advertisements, the public hearing minutes, the resolutions, and the transmittal letters to the planning agencies are included in Appendix C.

Appendix A
Plainfield Township Parks and Recreation Budgets

Plainfield Township
Standard Budget Report
 June 2005 Expenditures

| Account Nbr | Account Title | This Month | Y-T-D | Budget | Difference | Percent |
|-------------------------------------|------------------------|----------------|-------------------|-------------------|---------------|---------------|
| Fund: GENERAL OPERATING FUND | | | | | | |
| Recreation and Culture | | | | | | |
| Parks | | | | | | |
| 101-751-702.000 | Salaries | 120.00 | 1,260.00 | 1,500.00 | 240.00 | 84.00 |
| 101-751-705.000 | MAINTANCE WAGES | 399.52 | 864.33 | 1,500.00 | 635.67 | 57.62 |
| 101-751-715.000 | Social Security | 37.50 | 160.45 | 500.00 | 339.55 | 32.09 |
| 101-751-728.000 | MOWING SUPPLIES | 93.44 | 558.21 | 700.00 | 141.79 | 79.74 |
| 101-751-921.000 | Sewer | 0.00 | 154.00 | 250.00 | 96.00 | 61.60 |
| 101-751-930.000 | Repair And Maintenance | -65.00 | 2,299.72 | 1,500.00 | -799.72 | 153.31 |
| 101-751-956.000 | Miscellaneous | -3.46 | 901.39 | 500.00 | -401.39 | 180.28 |
| 101-751-970.000 | Capital Outlay | 0.00 | 4,888.64 | 5,000.00 | 111.36 | 97.77 |
| Total Parks | | 582.00 | 11,086.74 | 11,450.00 | 363.26 | 96.83 |
| Total Recreation and Culture | | | | | | |
| | | 582.00 | 11,086.74 | 11,450.00 | 363.26 | 96.83 |
| Total Expenditures | | 582.00 | 11,086.74 | 11,450.00 | 363.26 | 96.83 |
| CHANGE IN FUND EQUITY | | -582.00 | -11,086.74 | -11,450.00 | 363.26 | -96.83 |

Appendix B
Public Input Flyer

Plainfield Township Recreation Plan COMMUNITY INPUT MEETING

Wednesday, December 7

9 a.m.

Township Hall

220 N. Washington, Hale

You are invited!



Plainfield Township is developing a recreation plan to guide us for the next 5 years and beyond. We would like to hear from residents and key stakeholders to get your ideas about park facilities and recreational programs in Plainfield Township.



Please stop in to talk with the recreation leaders in your community. **We want to hear from you!**



Appendix C

Notice of public hearing & availability of draft plan for review

Minutes from the public hearing

Signed and dated resolution from the Plainfield Township Parks and Recreation Board

Signed and dated resolution from the Plainfield Township Board

Transmittal Letters

**PLAINFIELD TOWNSHIP PARKS AND RECREATION
PUBLIC HEARING
February 15, 2006**

Plainfield Township Board of Trustees will hold a public hearing on Feb. 15, 2006 at 3:00 p.m. in the meeting room on the 5 year Parks and Recreation Plan. These plans are available for review at the Township Hall.

Elaine Bielby

Elaine Bielby
Plainfield Township Clerk

*Please publish Jan. 18, 2006 as
a block ad*

PLAINFIELD TOWNSHIP PARKS & RECREATION BOARD MEETING
Special Meeting to Adopt A Five-Year Plainfield Township Recreation Plan

February, 15 2006

The meeting was called to order by Lorenz at 2:00 p.m.

Roll Call: Present, Duane Caverly, Joan Lorenz, Art Beauchesne, Carrie Portuesi

Open meeting public in attendance.

No new minutes from previous meeting to be read or approved.

Lorenz opened meeting for public discussion.

Mark Rehil Vice President Hale Area Baseball Softball Association addresses the ongoing need for a sports complex. And their Associations repeated request to the township for support.

Robert Egers from Spicer Group informs Mr. Rehil of the particular action item in the five-year plan that would acquire land for that purpose.

Bill McKulsky from Century 21 real estate attended the meeting with a property description of the property secretary Carrie Portuesi had inquired about for the said sports complex.

Mr. Rehil exclaimed although the property was prime land the location alone would bring more business to town. And would be more accessible to the town. Everyone would see it he said. There was mentioning of other complexes and the revenue brought in by holding tournaments, concessions and banner sign ads.

Portuesi insists that organizations in our area need to be more informed of what our townships boards are doing and have their in put. Also the need of revenue for the parks and recreation department maybe starting a public works department.

Chuck Parkinson asks Mr. Eggers if a mileage proposal could be created to assist in buying and creating a sports complex. Mr. Eggers answers Mr. Parkinson's inquiry with a yes.

Public discussion closed by Lorenze

Lorenze made a motion to adopt the Five-Year Plainfield Township Recreation Plan Caverly seconded the motion board voted Beauchesne yes, Portuesi yes, motion carried. Five-Year Plan adopted by the Plainfield Township board of Parks and Recreation.

Motion to adjourn was made by Lorenze and supported by Caverly motion carried. Meeting adjourned at 2:50 p.m.

**RESOLUTION OF SUPPORT
PLAINFIELD TOWNSHIP RECREATION PLAN 2006-2011**

WHEREAS, the Parks and Recreation Commission of Plainfield Township has undertaken the development of a 5-year *Plainfield Township Recreation Plan* which describes the physical features, existing recreation facilities and the desired actions to be taken to improve and maintain facilities during the period between 2006 and 2011, and

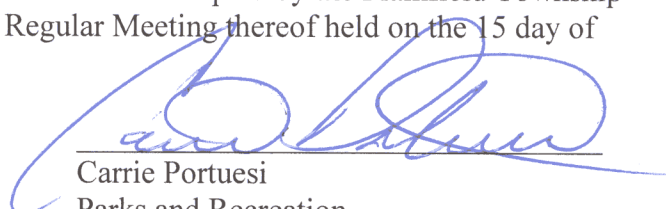
WHEREAS, a public hearing was held on Wednesday, February 15, 2006 at 2:00 p.m. to provide an opportunity for citizens to express opinions, ask questions and discuss all aspects of the Recreation Plan, and

WHEREAS, the Plainfield Township Parks and Recreation Commission created the plan to benefit the entire Plainfield Township community and to use the plan as a resource to assist in meeting the recreation needs of township residents, and

WHEREAS, After concluding the public hearing the Plainfield Township Parks and Recreation commission approves the *Plainfield Township Recreation Plan 2006-2011* as a guideline for improving recreation for the residents of Plainfield Township and recommends adoption of the *Plan* by the Plainfield Township Parks and Recreation Committee.

(Yeas: 4 Nays: 0 Absent: 1.)

I, Carrie Portuesi, Parks and Recreation Commission, do hereby acknowledge that the foregoing is a true and original copy of a resolution adopted by the Plainfield Township Parks and Recreation Commission at a Regular Meeting thereof held on the 15 day of February 2006.



Carrie Portuesi
Parks and Recreation
Commission Secretary



RESOLUTION

To adopt the Parks and Recreation Five (5) Year Plan as presented and adopted by the Plainfield Parks-N-Recreation Board on February 15, 2006.

The foregoing Resolution was offered by Board member Caverly supported by Board member Brown.

Upon roll call, the following voted "Aye":

*Bassi
Caverly
Brown
Bielby
Parkinson*

Nay:

None

The Supervisor declared the Resolution adopted.

CERTIFICATE

I, Elaine Bielby, the duly elected Clerk of Plainfield Township, hereby certify that the foregoing Resolution was adopted by the Township Board of Plainfield Township at the regular meeting of said Board held on February 15, 2006, at which meeting a quorum was present by a roll call vote of said members as here-in-before set forth; that said Resolution was ordered to take immediate effect.

Elaine Bielby

*Elaine Bielby
Plainfield Township Clerk*

OFFICE LOCATIONS

SAGINAW, MI
ST. JOHNS, MI
CARO, MI
DETROIT, MI



ENGINEERS • SURVEYORS • PLANNERS

SAGINAW
230 S. WASHINGTON AVE.
P.O. BOX 1689
SAGINAW, MI 48605
(989) 754-4717 (800) 833-0062
FAX: (989) 754-4440

February 22, 2006

John Freel
Iosco County Planning Commission
422 E. Lake Street
Tawas City, Michigan 48763

RE: Plainfield Township Recreation Plan
Recreation Plan

Mr. Freel:

Please find enclosed the recently adopted Five Year Recreation Plan for Plainfield Township.
If you have questions regarding the Plan feel free to contact me.

Sincerely,

SPICER GROUP, INC.

A handwritten signature in blue ink that reads "Robert R. Eggers" with a stylized flourish at the end.

Robert R. Eggers AICP
Project Manager

111475.05/_corresp/trans_county.doc

Principals: Donald R. Scherzer, Dale K. Deibel, P.E., James J. Cook, Robert R. Eggers, AICP, Ronald B. Hansen, P.E., Mark A. Latsch, P.E.,
Shawn P. Middleton, P.E., Larry J. Protasiewicz, P.E., Jeffrey E. Wood, P.S., Wayne A. Zolnierk, P.E.,

Senior Associate: Charles W. McDonald,

Associates: Marshall A. Bilodeau, Peter N. Chapman, P.E., Darrick W. Huff, P.E., Jean M. Inman, P.E., Tim A. Inman, P.E., Roger P. Mahoney, P.S., John E. Olson, P.E.

OFFICE LOCATIONS

SAGINAW, MI
ST. JOHNS, MI
CARO, MI
DETROIT, MI



ENGINEERS • SURVEYORS • PLANNERS

SAGINAW
230 S. WASHINGTON AVE.
P.O. BOX 1689
SAGINAW, MI 48605
(989) 754-4717 (800) 833-0062
FAX: (989) 754-4440

February 22, 2006

East Central Michigan Planning
3144 Davenport
Saginaw, MI 48602

RE: Plainfield Township, Iosco County
Recreation Plan

To Whom It May Concern:

Please find enclosed the recently adopted Recreation Plan for Plainfield Township. If you have any questions regarding the Plan feel free to contact me.

Sincerely,

SPICER GROUP, INC.

A handwritten signature in blue ink that reads "Robert R. Eggers".

Robert R. Eggers, AICP
Project Manager

111475.05/_corresp/trans_ecmp.doc

Principals: Donald R. Scherzer, Dale K. Deibel, P.E., James J. Cook, Robert R. Eggers, AICP, Ronald B. Hansen, P.E., Mark A. Latsch, P.E.,
Shawn P. Middleton, P.E., Larry J. Protasiewicz, P.E., Jeffrey E. Wood, P.S., Wayne A. Zolnierok, P.E.,

Senior Associate: Charles W. McDonald,

Associates: Marshall A. Bilodeau, Peter N. Chapman, P.E., Darrick W. Huff, P.E., Jean M. Inman, P.E., Tim A. Inman, P.E., Roger P. Mahoney, P.S., John E. Olson, P.E.